



Bartholomew Square

, Brighton BN1 1JS

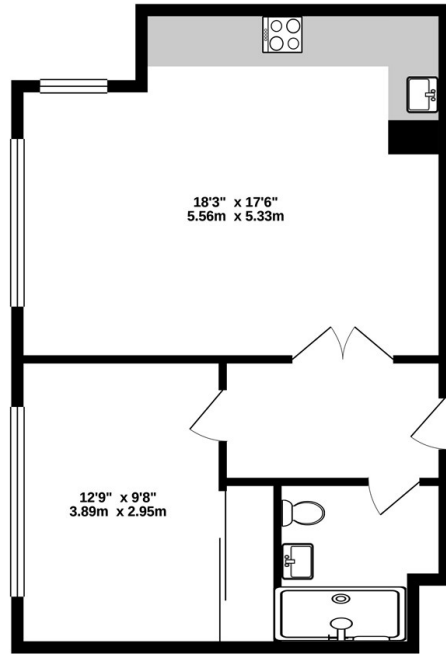
- Underfloor Heating
- First Floor Flat
- Kitchen With Integrated Appliances
- One Double Bedroom Apartment
- Long Term Let
- Student Friendly
- Finished To A High Standard
- Great Central Brighton Location
- Furniture Optional
- Parking Available Under Sperate Negotiation

£1,450 PCM



Local Authority Brighton &
Hove City Council
Council Tax Band C
EPC Rating D

FLOOR NAME
528 sq.ft. (49.1 sq.m.) approx.



TOTAL FLOOR AREA: 528 sq.ft. (49.1 sq.m.) approx.
Whilst every attempt has been made to ensure the accuracy of the floorplan contained herein, measurements of doors, windows, rooms and any other items are approximate and no responsibility is taken for any error, omission or mis-statement. This plan is for illustrative purposes only and should be used for each by any prospective purchaser. The services, systems and appliances shown have not been tested and no guarantee as to their operability or efficiency can be given.
Made with Metropix ©2021



Moretons Lettings Office
30-31 North Street, Brighton,
East Sussex, BN1 1EB

Contact

Agents Note: Whilst every care has been taken to prepare these particulars, they are for guidance purposes only. All measurements are approximate and for general guidance purposes only and whilst every care has been taken to ensure accuracy, they should not be relied upon and potential buyers/tenants are advised to recheck the measurements.